



GAT MONTHLY MEMBERSHIP PROGRESS REPORT

Results as of: 10/31/2022

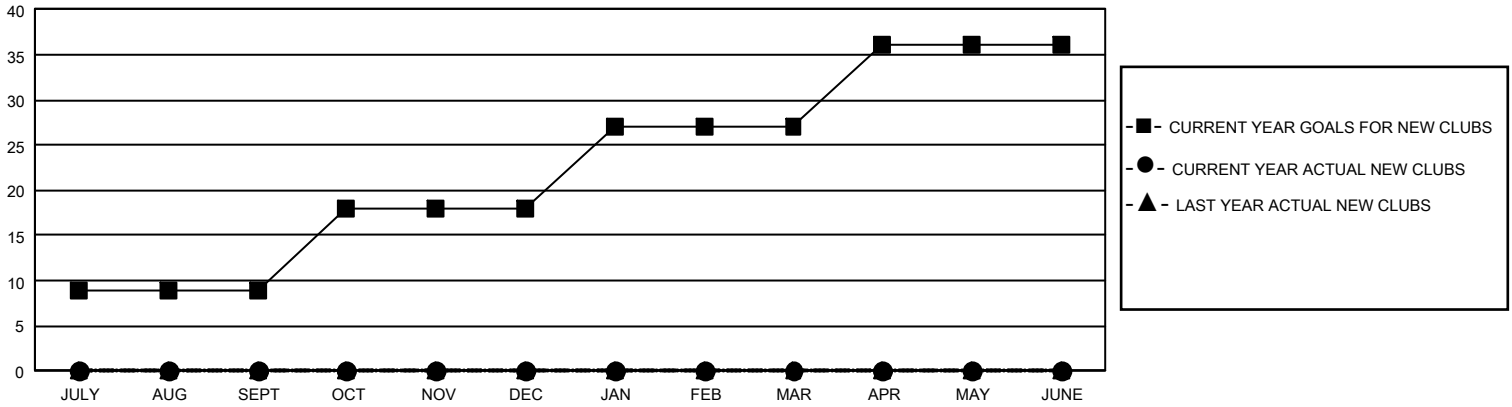
GMT Constitutional Area 5 - C, Group C

REPORT DOES NOT INCLUDE CLUBS IN UNDISTRICTED AREAS.

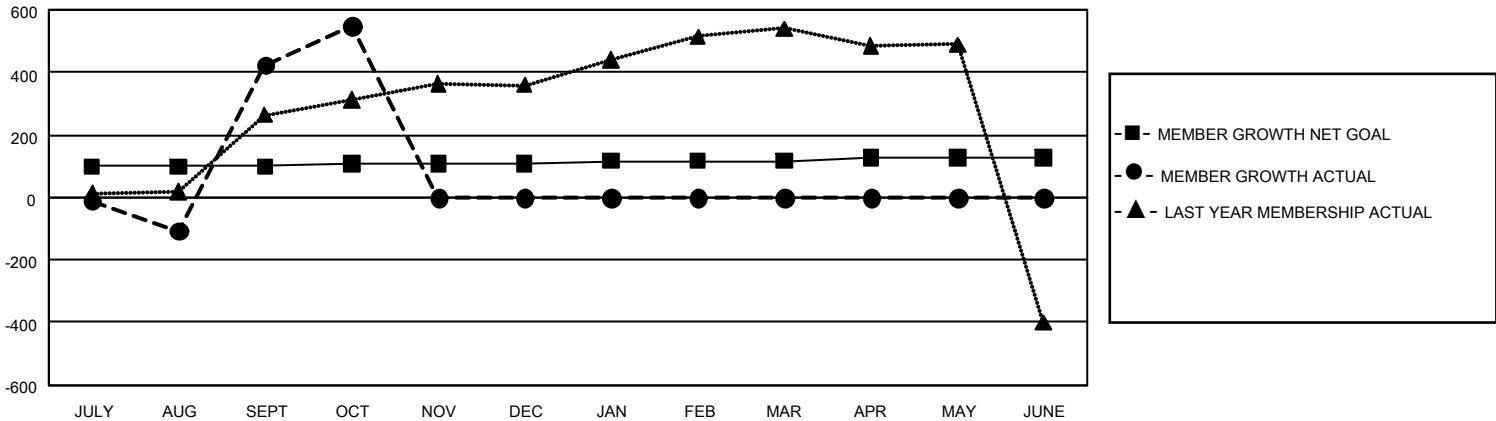
Clubs			
RESULTS FOR 2022-2023			
QUARTER	NEW CLUB GOAL	NEW CLUBS	DROPPED CLUBS
JULY/AUG/SEPT	27	0	8
OCT/NOV/DEC	27	0	0
JAN/FEB/MAR	27	0	0
APR/MAY/JUNE	27	0	0

Members			
RESULTS FOR 2022-2023			
QUARTER	MEMBER GROWTH NET GOAL	MEMBER GROWTH ACTUAL	DROPPED MEMBERS ACTUAL (including transfers)
JULY/AUG/SEPT	99	629	155
OCT/NOV/DEC	9	156	6
JAN/FEB/MAR	9	0	0
APR/MAY/JUNE	9	0	0

GOALS AND ACTUAL NEW CLUBS CUMULATIVE



GOALS AND ACTUAL MEMBERS CUMULATIVE



DROPPED CLUBS: 8	130 CLUBS OF 171 ADDED 1 OR MORE NEW MEMBERS	<u>GENDER DISTRIBUTION</u>	
		MALE 2,046 (54.97%) FEMALE 1,676 (45.03%) NON BINARY 0 (0.00%) PREFER NOT TO ANSWER 0 (0.00%)	
<u>DROPPED MEMBERS</u>		CLICK HERE FOR CUMULATIVE MEMBERSHIP DATA	TOTAL FAMILY UNIT MEMBERS 364
DECEASED 0 CLUB CANCELLED 89 OTHER 72 TOTAL 161			FAMILY MEMBERS PAYING HALF DUES 187